



# GRAIGUENAMANAGH- TINNAHINCH JOINT LOCAL AREA PLAN 2020-2026

Pre Draft Public Consultation Issue Paper



## ISSUES PAPER

### Pre-draft Public Consultation

Kilkenny County Council in conjunction with Carlow County Council are inviting all interested parties including residents, business owners, groups, youth groups, sport groups and other stakeholders to make submissions on the issues raised in this pre-draft consultation paper and any other themes you consider relevant to the preparation of the Joint Local Area Plan. Pre-Draft submissions on the Graiguenamanagh – Tinnahinch Joint LAP can be submitted online or sent in by post during the consultation period. Written submissions can also be made at the information session between 7.30pm and 9.30pm on 7<sup>th</sup> of November 2019 at ‘The Hub’ Graiguenamanagh. All Submissions must be made no later than 22<sup>nd</sup> of November 2019 @ 5pm.

### What is the purpose of this document?

This Issues Paper is the first step in the preparation of a new Joint Local Area Plan for Graiguenamanagh-Tinnahinch for the period 2020 to 2026. This Plan will replace the current Graiguenamanagh Local Area Plan (LAP) 2009-2015 as extended to 15<sup>th</sup> February 2020 and the Tinnahinch LAP 2010-2016. These Plans are now being reviewed and following this non-statutory pre-draft public consultation, a new Draft Plan will be prepared, which will require a further statutory period of public consultation. When adopted by both Planning Authorities, the new Joint LAP will be in force for the next six years. This Issues Paper highlights key issues/questions that

may need to be considered in preparing the Joint Local Area Plan for Graiguenamanagh-Tinnahinch.

The Issues Paper is furthermore intended to stimulate debate on some of these matters and to encourage and facilitate your involvement in the process at this early stage. We encourage you to actively participate in helping to shape the future of your town. There will be further opportunities to engage in the process and we would sincerely hope that you take every opportunity to make your contribution.

### **What is a Local Area Plan?**

A Local Area Plan (LAP) is intended to provide a framework of detailed planning policies for the town which will be informed through a process of public participation and consultation. The LAP is an important policy framework to be used to facilitate new housing, to promote and encourage economic renewal and to ensure that lands are zoned for specific and appropriate purposes whilst protecting environmental and heritage qualities.

The Joint LAP will consist of a written statement and accompanying maps including a Vision, Policies and Key Objectives specific to Graiguenamanagh-Tinnahinch. These will provide for a sustainable level of growth in tandem with a range of services, physical and social infrastructure and employment over the next six years and beyond to meet the needs of the town and its hinterland. The Joint LAP will also be informed and accompanied by a Strategic Environmental Assessment, Appropriate Assessment and Strategic Flood Risk Assessment.



### **What is the Local Area Plan process?**

The purpose of this pre-draft public consultation stage is to engage with the people who live, work, recreate in and visit Graiguenamanagh-Tinnahinch and to encourage early engagement on land use planning issues which will assist in establishing a vision for the town over the plan period and beyond. Consultation with the public will form a key part of the overall plan preparation process and will inform the policies, objectives and actions of the Local Area Plan. This initial consultation will form the basis of the draft Joint Local Area Plan.

### **What can the Local Area Plan do?**

The plan review and preparation process will be guided by a wide range of considerations, such as public and stakeholder consultation, the key issues and needs identified by local

communities and businesses, employment activities and opportunities, services and infrastructure available and required, heritage and environmental issues, statutory requirements, etc.

The Joint LAP will set out a vision for the area and will specify the type, amount and quality of development needed to achieve that vision, while seeking to protect and enhance the environment and amenities. The Joint LAP should be viewed and used as a positive policy document intended to manage and influence change in our local communities, aiming to highlight opportunities and identify issues to be addressed to ensure that the opportunities are realised.

### **Graiguenamanagh-Tinnahinch in Context**

Graiguenamanagh – Tinnahinch is situated on the River Barrow in the steep sided valley between Brandon Hill in County Kilkenny and Mount Leinster in County Carlow. It is a rich cultural town located 16km from Thomastown, 33km from Kilkenny City, 40km from Carlow, 19km from New Ross and 41km from Waterford City. The 2016 Census of Population recorded a population of 1,475 persons living within the defined settlement boundary of Graiguenamanagh-Tinnahinch.

Graiguenamanagh is classified as a District Town within the Kilkenny County Settlement Hierarchy, while Tinnahinch is designated a Village within the Carlow County Settlement Hierarchy. While not currently above the 1,500 population threshold, the towns possess many of the characteristics of a district town as identified in the Regional Planning Guidelines

RPG's, 2010- 2022 such as being close to the population level of 1,500 and having primary and second level schools.

It is an objective of the Kilkenny County Development Plan 2014-2020 (Objective 3E) *'To ensure that the District Towns will, in so far as practical, be self-sufficient incorporating employment activities, sufficient retail services and social and community facilities'*.

The unique natural environment and heritage qualities of the town provide Graiguenamanagh-Tinnahinch with a recognised potential for economic, social and cultural development. This Joint Plan will ensure a co-ordinated plan led approach to the future development of the town strategically located on the River Barrow so that the existing heritage, character and vibrancy is maintained and enhanced when planning for current and future needs.



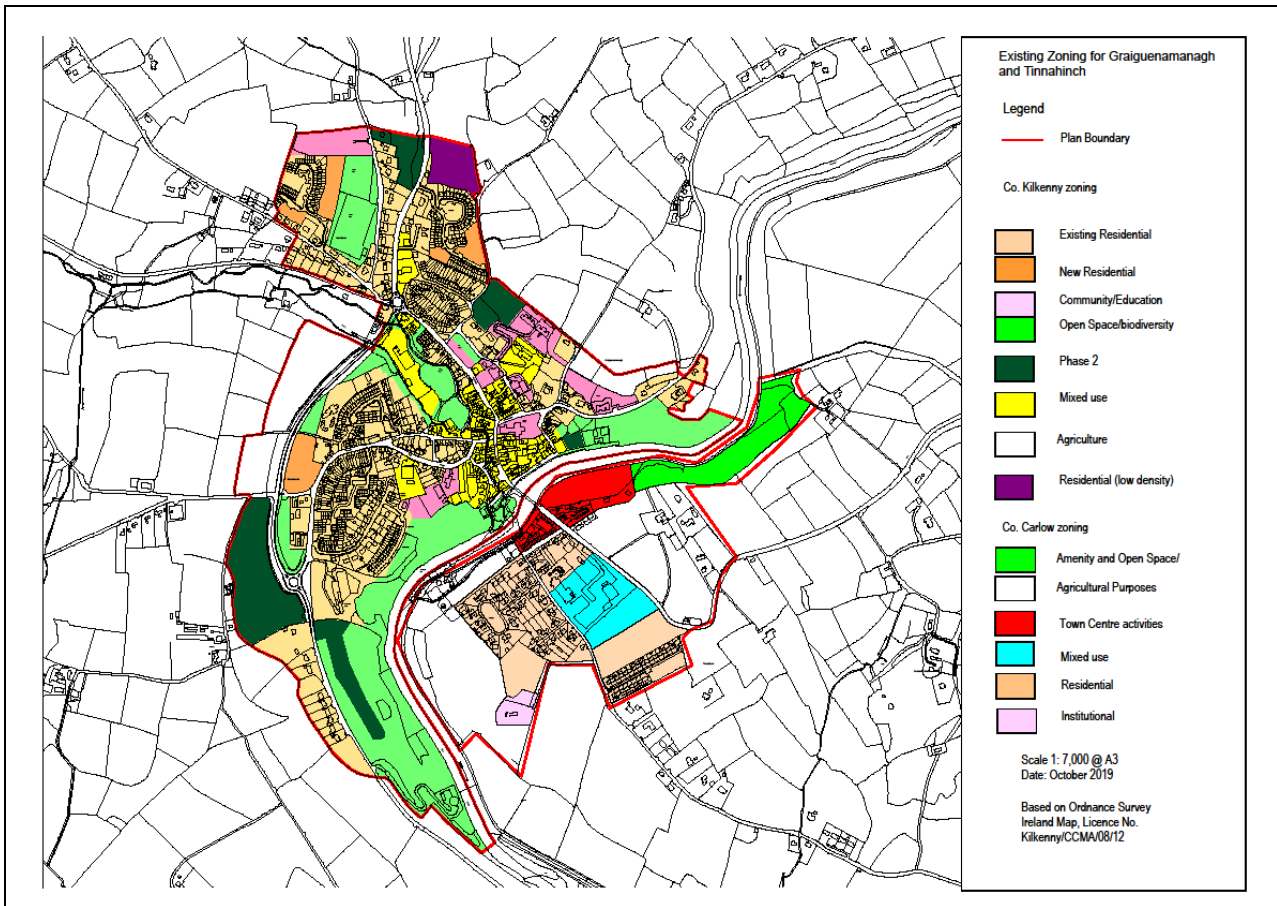
## Some Key Strengths / Challenges for Graiguenamanagh – Tinnahinch

### Strengths

- Strategically located in a high-quality rural landscape on the River Barrow.
- Rich built and cultural heritage dating back to the founding of Duiske Abbey in 1204.
- Zoned land for various uses.
- Significant potential to capitalise on economic and cultural tourism offering.

### Challenges

- Population Decrease between 2011 – 2016 (-87 persons /- 5.89%).
- Unemployment rate in 2016 recorded at 170 persons (27%).
- Significant older population 300 over 65 (21.5%).
- Delivery of Housing.
- Limited economic growth / job creation.
- Sustainable management of surface water / flooding.
- Investment required in the enhancement of community infrastructure and amenities.



Combined Land use Zoning Map Graiguenamanagh LAP 2009-2015 (as extended) and Tinnahinch LAP 2010-2016.

## What are the cross-cutting issues? (The bigger picture)

There are several cross-cutting issues of both local and national significance which affects all sectors in Graiguenamanagh-Tinnahinch. These include but are not limited to:

- **Sustainable Development** which implies that today's generation, can meet their development needs without compromising future generations' ability to do the same. Sustainability lies at the heart of all policies and will be central to the Joint Local Area Plan. Environmental sustainability in particular is a fundamental requirement and the Joint Local Area Plan will comply with all Irish and European legislation.



- **Climate Change**, the adaption for which is a fundamental issue that will also underlie all proposals contained in the Joint Local Area Plan. Scientific evidence is showing that the climate is changing and it is imperative to consider how human activity is influencing such change and how resultant impacts such as increased flooding can be better planned for or averted. The main areas where reduced carbon emissions can be achieved are energy, land use planning, transport, waste management and biodiversity.
- **Promotion of Public Health** which is the consideration of the impact of all development proposals in achieving a healthy environment through promoting both quality urban design and active travel. The public health consideration should permeate all spatial decisions in order to ultimately result in the fostering of healthy communities.
- **Social Inclusion** the focus of which is the improvement and wellbeing of all individuals. The Joint Local Area Plan will provide for objectives that can promote a sense of community, promote access to social infrastructure, information and resources.
- **High Quality Design** the focus of which is the continuous improvement of the quality of design of the built environment. A high quality of design makes places more appealing to work, live and play in and leads to improved pride and sense of community. High quality design in our built environment

therefore has a direct impact on our perception of our surroundings and can improve our quality of life.

### What are the Key questions to consider?

Public Participation is essential to help deliver an effective Joint Local Area Plan. Below are some additional questions or issues which you may consider if making a submission to the preparation of the Graiguenamanagh-Tinnahinch Joint Local Area Plan.

Taking into account the policy context and cross cutting issues, here are some key questions to consider for the emerging Joint LAP.



### Vision

- What is your vision for Graiguenamanagh-Tinnahinch and what could the Joint Local Area Plan target to assist in achieving this vision?

- How can the unique assets and characteristics of the town be enhanced and developed to ensure a sense of place for new residential areas?

## **Employment**

- How can the Joint Local Area Plan support and facilitate new business and employment?
- Should opportunity sites be identified and specific objectives formulated for underutilised areas of the town?
- Are there specific areas of tourism that should be targeted e.g. heritage, leisure, industrial tourism? How can the Joint Local Area Plan facilitate these?

## **Town Centre & Retail**

- What do you like about Graiguenamanagh-Tinnahinch?
- What do you feel needs to be changed and why?
- How can the integration of the two town centres be improved?
- How can this Joint Local Area Plan help to reduce vacancy rates and to retain and attract new uses within the town centre?
- What type of retail facilities are needed to meet the demand of existing and future residents?

## **Housing & Community**

- Where should new housing be developed in Graiguenamanagh-Tinnahinch and how can this Joint Local

Area Plan to ensure that the needs of different groups are adequately catered for?

- Are there adequate health and childcare facilities in the town that are easily accessible to all?
- Can you identify other possible locations appropriate for community facilities?
- Are there sufficient facilities for younger and older residents of the town?

### **Walking, Cycling, Traffic & Public Health**

- Have you any specific suggestions to encourage the use of public transport, cycling and walking in Graiguenamanagh-Tinnachinch?
- How do you think the Plan could facilitate improved access for people with impaired mobility?
- How can traffic management be improved on the very narrow streets with on street parking
- Are there areas where new or improved footpaths, cycle ways, roadways and links to public transport services should be provided?

### **Built & Natural Heritage**

- How can the landscape, natural and built heritage, green infrastructure and local biodiversity areas be suitably protected while accommodating the development needs of the town?

- How can this LAP encourage the utilisation and enhancement of existing amenity areas such as the river and river bank to provide for both passive and active recreation?
- Is there an adequate quantity and quality of play, open space and recreational facilities in the Graiguenamanagh-Tinnahinch area?
- How best can we integrate a Green Infrastructure approach to development of lands in Graiguenamanagh-Tinnahinch?

### How do you get involved?

Kilkenny and Carlow County Councils will review and consider all of the pre-draft submissions received prior to the commencement of the preparation the Draft Graiguenamanagh-Tinnahinch Joint LAP 2020-2026. Pre-Draft submissions on the Joint Plan can be submitted online or sent in by post during the consultation period. Written submissions can also be made at the information session between 7.30pm and 9.30pm on 7<sup>th</sup> of November 2019 at 'The Hub' Graiguenamanagh.

**Note:** There will be an opportunity to make submissions on the Draft Joint LAP and any subsequent material alterations to the Joint Draft LAP as the plan making process progresses and public notices and press releases will be published as these consultation stages arise and are scheduled.

**Submissions can be made before 5pm on Friday 22<sup>nd</sup> of November 2019 as follows:**

- Online at: [consult.kilkenny.ie](http://consult.kilkenny.ie)

- By email to: [ourplan@kilkennycoco.ie](mailto:ourplan@kilkennycoco.ie)
- By email to: [jointLAP@carlowcoco.ie](mailto:jointLAP@carlowcoco.ie)

## Post

### **Pre-draft Consultation Graiguenamanagh – Tinnahinch Joint LAP 2020- 2026**

Planning Department  
Kilkenny County Council  
County Hall  
John Street  
Kilkenny

Planning Department  
Carlow County Council  
County Buildings  
Athy Road  
Carlow



**Submissions must be made no later than 22<sup>nd</sup> November 2019 @ 5pm**

YOUR COMMENTS:

---

---

---

---

---

---

---

---

---

---

---

---

---

---

---

---

---

---

---

---

---

---

---

---

---

---

---

---

---

---

---

Name: \_\_\_\_\_

Address: \_\_\_\_\_

Contact details: \_\_\_\_\_

---

---