

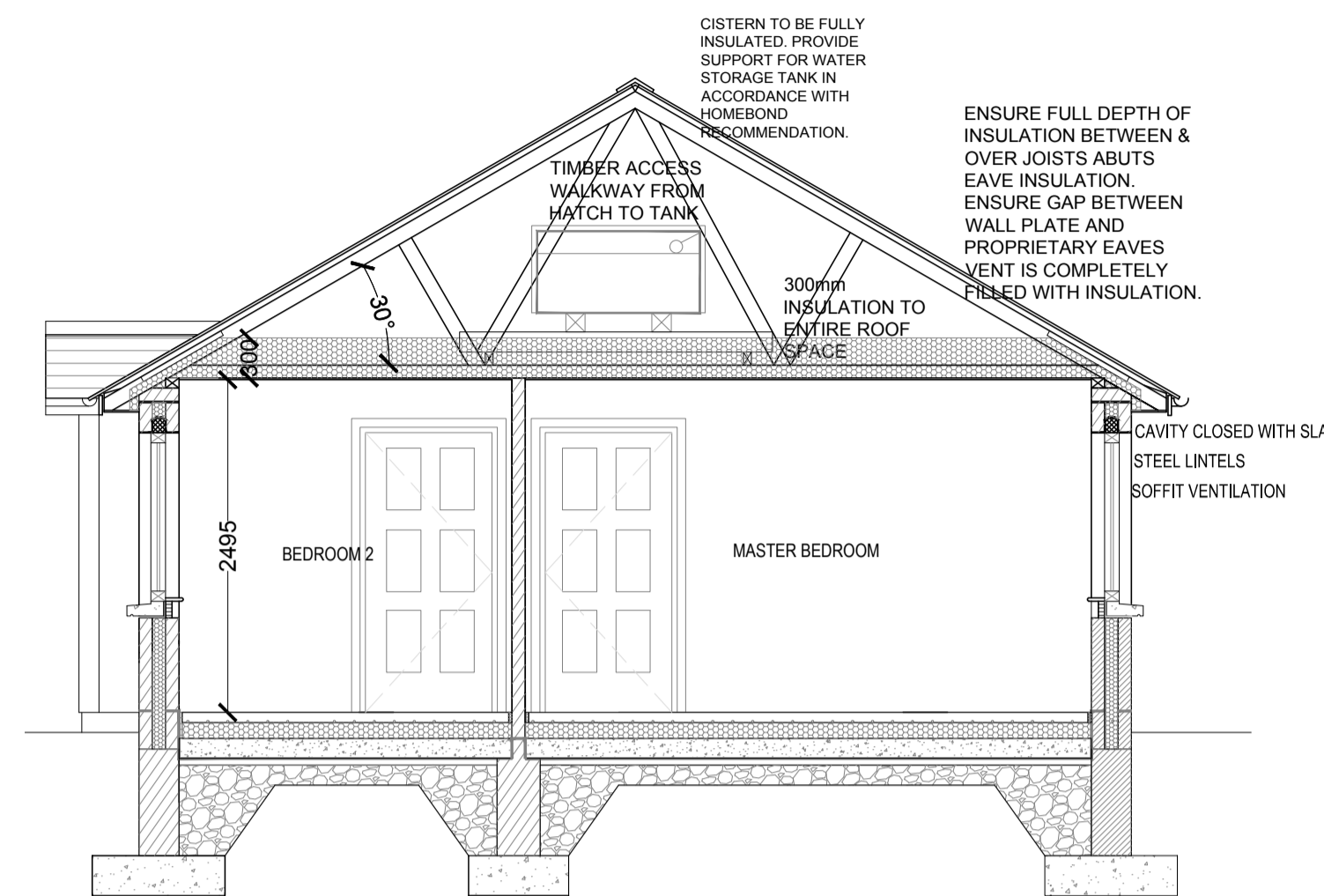
Ground Floor Plan
Ground Floor Plan - Area: 65.0 m sq / unit
Scale 1:50



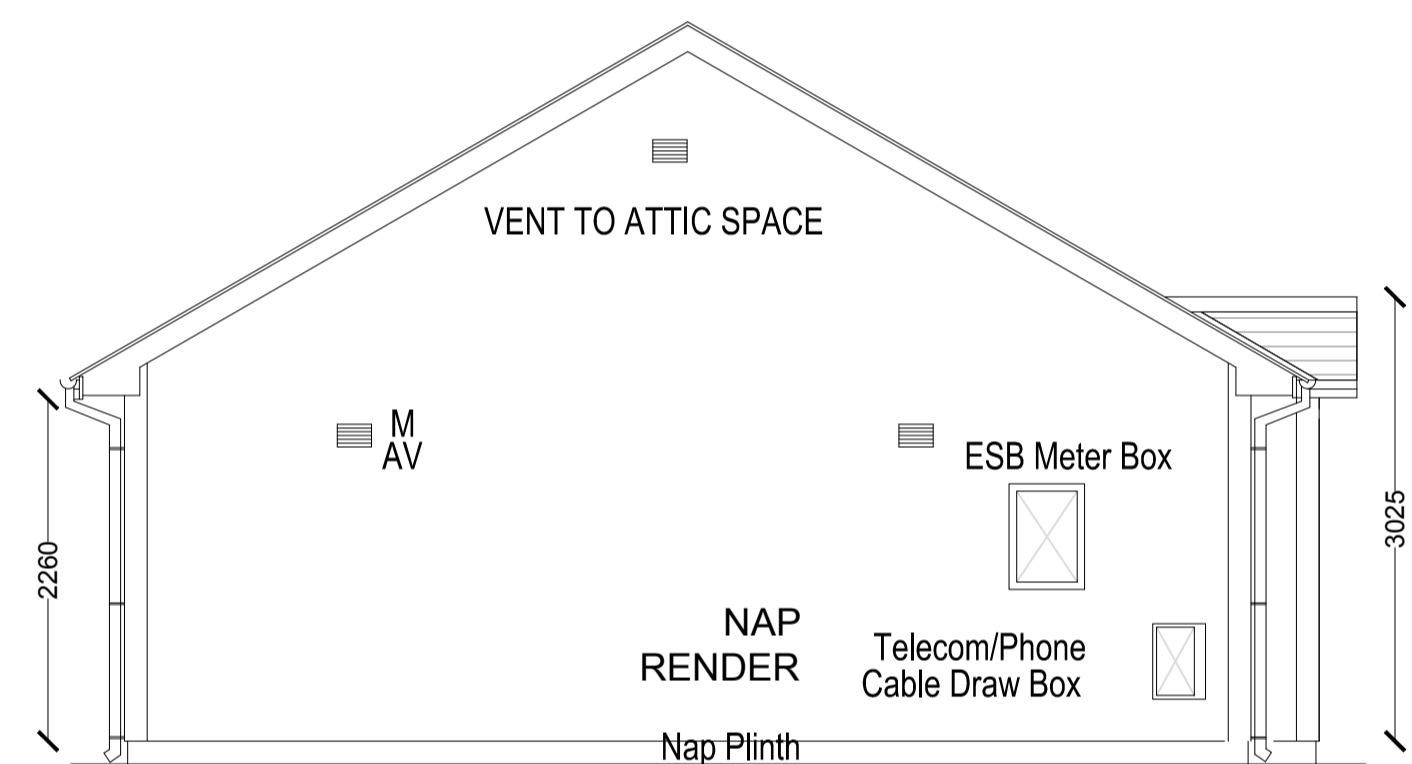
FRONT ELVEATION
Scale 1:50



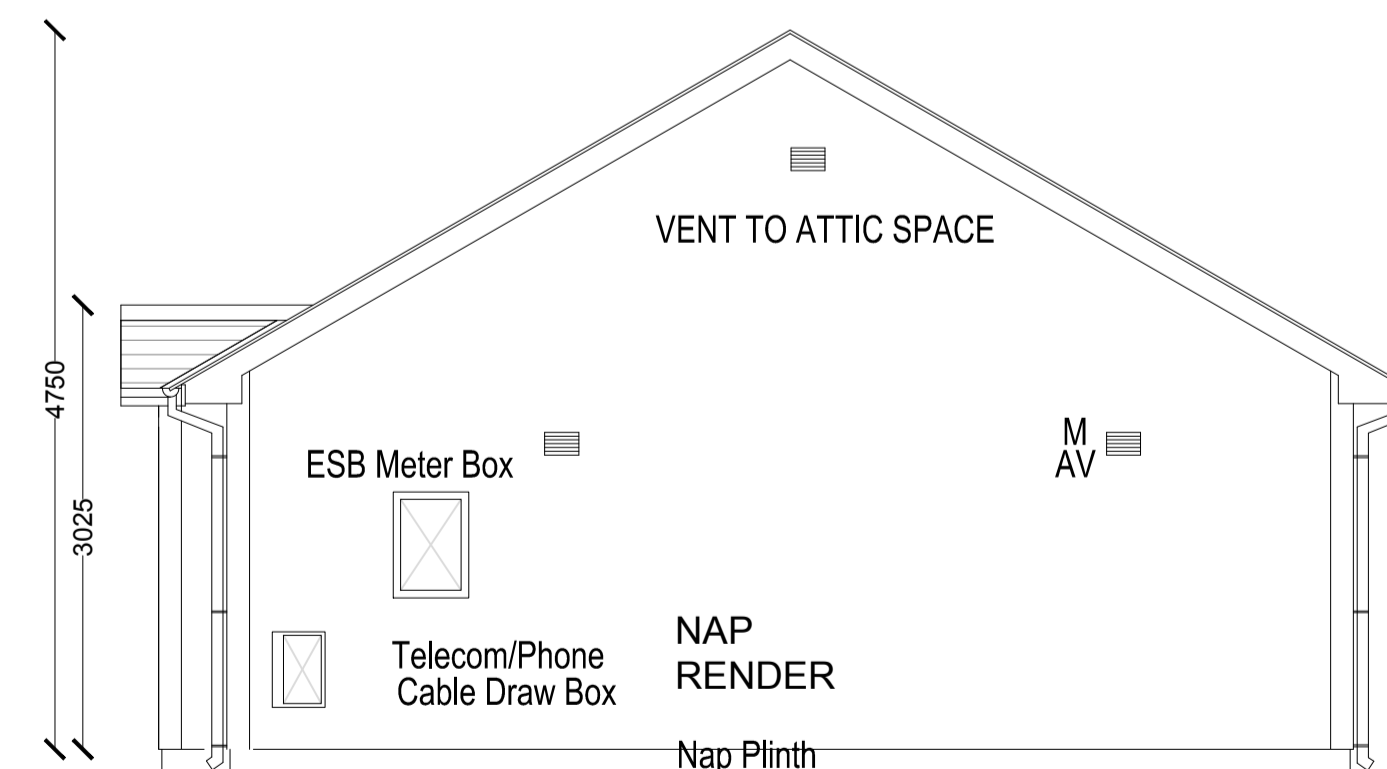
Rear Elevation
Scale: 1/50



Cross Section A-A
Scale 1:50



SIDE ELVEATION
Scale 1:50



SIDE ELVEATION
Scale 1:50

NOTES

1. This drawing is the property of Carlow County Council, it is a confidential document and must not be copied, used, or its content divulged without prior written consent.
2. DO NOT SCALE, use figured dimensions only, if in doubt ask.

KEY TO ELECTRICAL SYMBOLS

NOTE: INCLUDE FOR ALL NECESSARY BUILDERS WORK AND ATTENDANCES FOR MECH & ELEC. INSTALLATIONS. ALL CHASINGS TO BE MACHINE CUT

⊕	EXTERNAL LIGHT
⊕	LIGHTING BATTEN
⊕	DUAL GROUP IMMERSION HEATER
⊕	1 GANG LIGHT SWITCH
⊕	2 GANG LIGHT SWITCH
⊕	COOKER SWITCH
⊕	FRIDGE SWITCH
⊕	MECHANICAL VENTILATION UNIT
⊕	STRIP LIGHT SHAVER SOCKET
⊕	DOUBLE SOCKET-WORKTOP LEVEL
⊕	SINGLE SOCKET-WORKTOP LEVEL
⊕	DOUBLE SOCKET
⊕	TV AERIAL SOCKET
⊕	CONSUMER UNIT WITH ELCB
⊕	TELEPHONE POINT
⊕	WALL MOUNTED HEATING CONTROL
⊕	CARBON MONOXIDE DETECTOR (EI 261 ENRC)
⊕	HEAT DETECTOR (EI 164 RC)
⊕	SMOKE ALARM (EI 2110 MULTI-SENSOR)
⊕	SMOKE ALARM (EI 166 RC OPTICAL)
⊕	EXTRACT FAN SOCKET
⊕	DOOR BELL
⊕	DOOR BELL PUSH
⊕	Smoke Alarm (EI 2110 Multi-Sensor)
⊕	Heat Detector (EI 164 RC)
⊕	Smoke Alarm (EI 166 RC Optical)
⊕	Carbon Monoxide Detector (EI 261 ENRC)

LOCATIONS OF FIRE STOPPING - WORKS BY APPROVED SPECIEST CONTRACTOR



Includes Ordnance Survey Ireland data reproduced under OSI Licence Number 2010/21 CMA Carlow County Council. Unauthorised reproduction infringes Ordnance Survey Ireland and Government of Ireland Copyright Ordnance Survey Ireland 2015

No.	Date	Amendment / Issue	App.
A	xx/xx/xx	xxxxxxxxxxxxxxxxxxxx	L.S.

CARLOW COUNTY COUNCIL
HOUSING DEPARTMENT
Director Of Services: Seamus O'Connor
Tullow Civic Offices, Inner Relief Road, Tullow, Co. Carlow
Phone: (059)9136296 Fax: (059)9152156
Email: secretar@carlowcoco.ie

ENGINEERS IRELAND
Carlow Local Authorities, A CPD Accredited Company

Project:
PROPOSED DWELLINGS AT ST MARYS COURT, CARLOW

Title:
2 BED SINGLE STOREY SEMI-DETACHED HOUSES

Drawn by:	F.M.	Job No:	18-03
Checked by:	L.S.	Drw Loc:	
Approved by:	S.O.C.	Drw No:	
Scale:	As Shown		
Date:	13/01/2018		