

**NOTES**

1. This drawing is the property of Carlow County Council. It is a confidential document and must not be copied, used, or its content divulged without prior written consent.
2. DO NOT SCALE. Use figured dimensions only, if in doubt ask.

**OSi Ordnance Survey**  
*Includes Ordnance Survey Ireland data reproduced under OSI Licence Number 2010/21 CCM-A Carlow County Council. Unauthorised reproduction infringes Ordnance Survey Ireland and Government of Ireland Copyright © Ordnance Survey Ireland 2015*

A	xx/xx/xx	+	+	xxxxxxxxxxxxxxxxxxxx	L.S.
No	Date	+	+	Amendment / Issue	App.

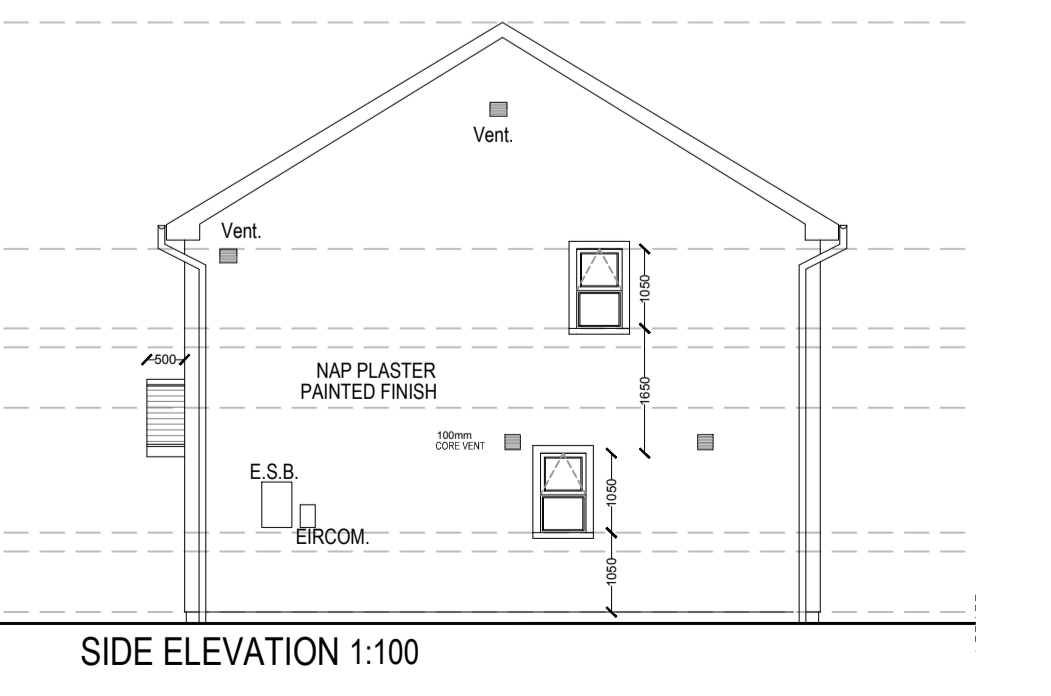
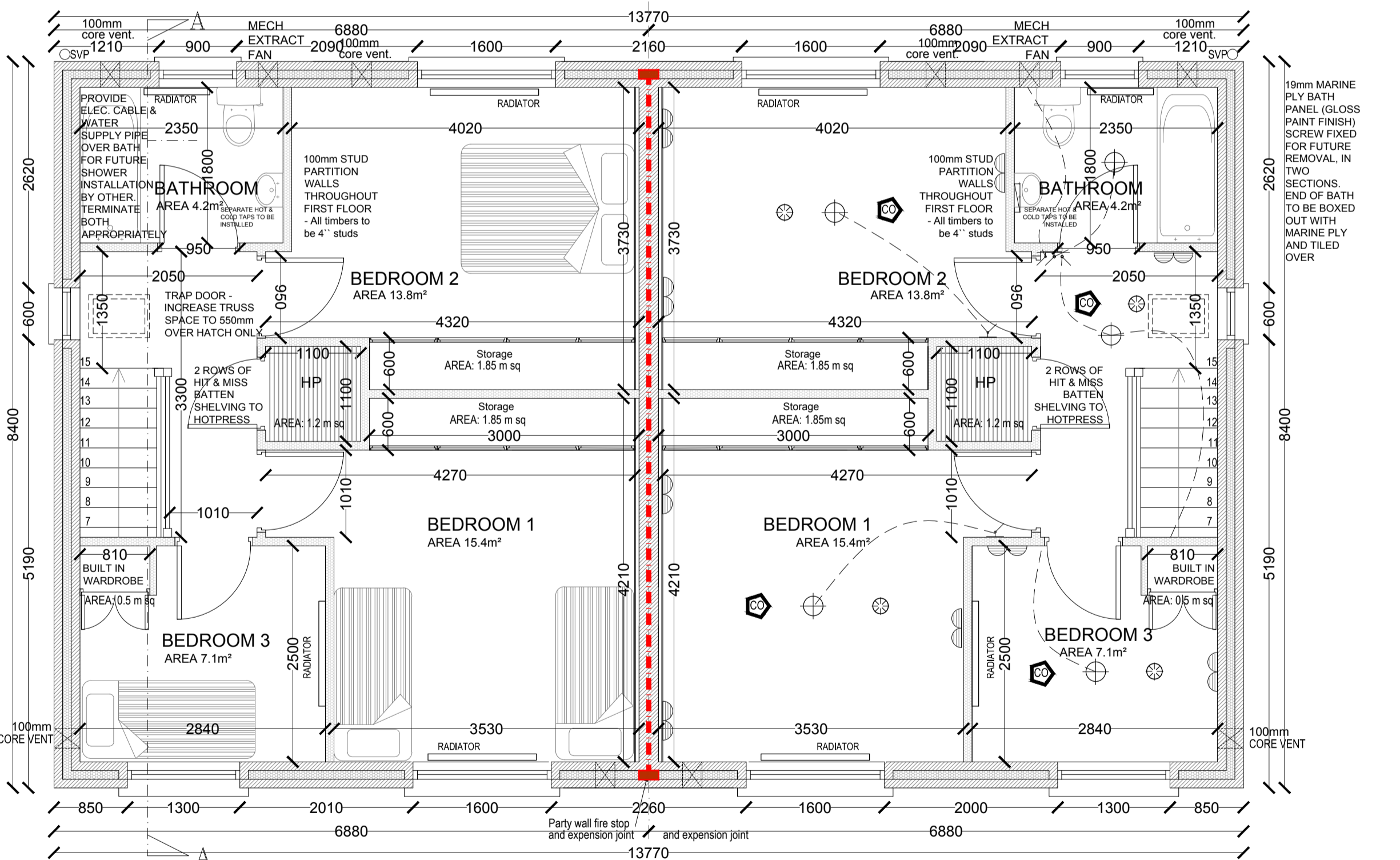
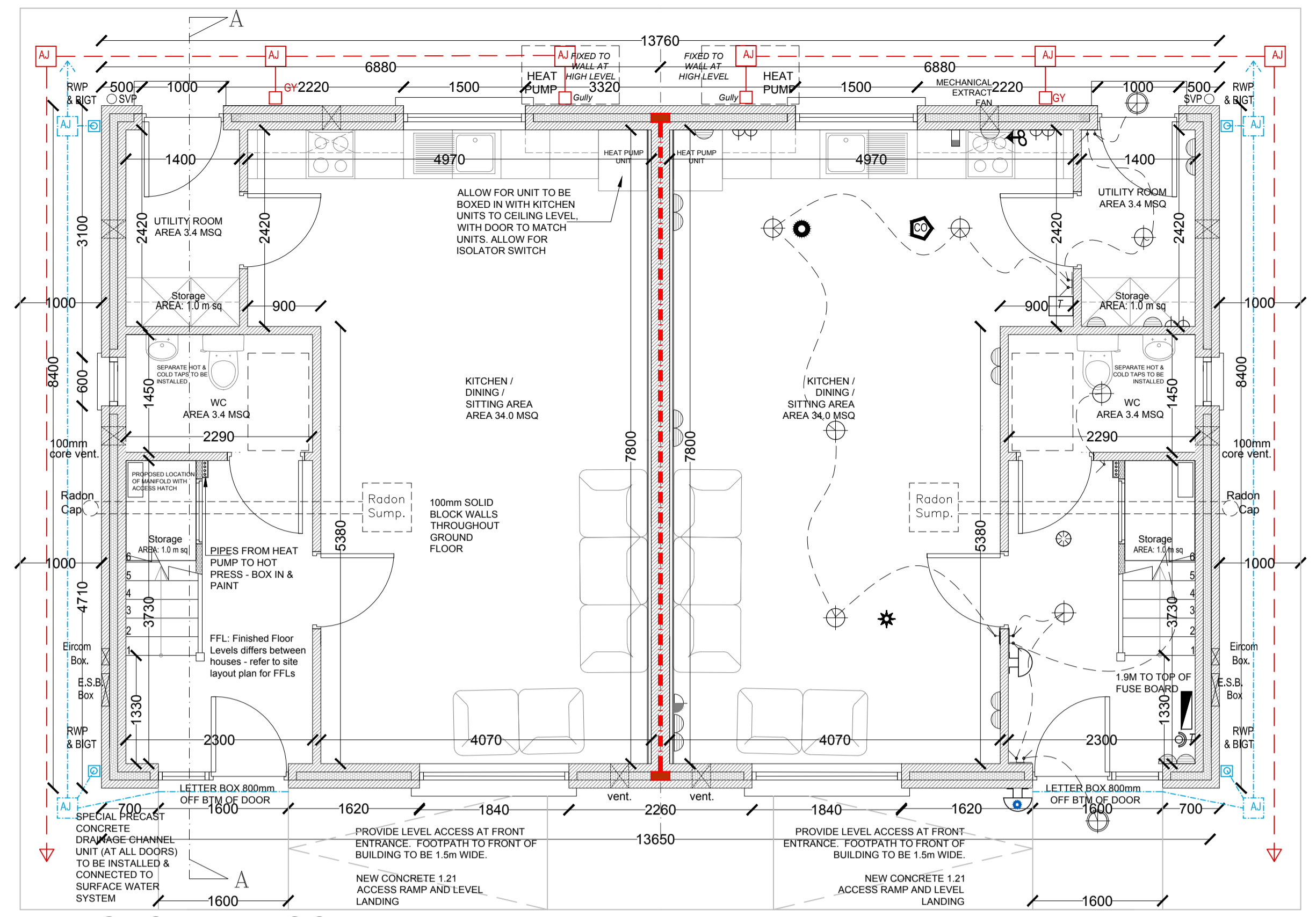
**CARLOW COUNTY COUNCIL**  
 HOUSING DEPARTMENT  
 Director Of Services: Seamus O'Connor  
 Tullow Civic Offices, Inner Relief Road, Tullow, Co. Carlow  
 Phone: (059)9136296 Fax: (059)9152156  
 Email: secretar@carlowcoco.ie

Carlow Local Authorities, A CPD Accredited Company

Project:  
**PROPOSED HOUSING AT DEREEN HEIGHTS, CARLOW**

Title:  
**3 BED TWO STOREY SEMI-DETACHED HOUSES**

Drawn by:	F.M.	Job No:	18-03
Checked by:	L.S.	Drw Loc:	
Approved by:	S.O.C.	Drw No:	
Scale:	As Shown	Date:	18-03-02
Date:	13/02/2018	Rev:	



**ELECTRICAL LEGEND:**

NOTE: INCLUDE FOR ALL NECESSARY BUILDERS WORK AND ATTENDANCES FOR MECH. & ELEC. INSTALLATIONS ALL CHASINGS TO BE MACHINE CUT

- Lighting point
- Single light switch
- Two-way light switch
- Twin 13 amp. socket
- worktop height
- Twin 13 amp. socket
- 450mm off FFL
- Single 13 amp. socket
- 450mm off FFL
- Cooker point
- Immersion point
- T.V. point socket
- Telephone
- Consumer unit installed
- Door Bell
- Door Bell - Push
- Wall mounted heating control
- Extract fan socket
- External Light
- Smoke alarm (E: 2110 Multi-Sensor)
- Heat Detector (E: 164 RC)
- Smoke alarm (E: 164 RC Optical)
- Carbon Monoxide Detector (E: 261 ENRC)
- STRIP LIGHT SHOWER SOCKET

LOCATIONS OF FIRE STOPPING - WORKS BY APPROVED SPECIALIST CONTRACTOR

