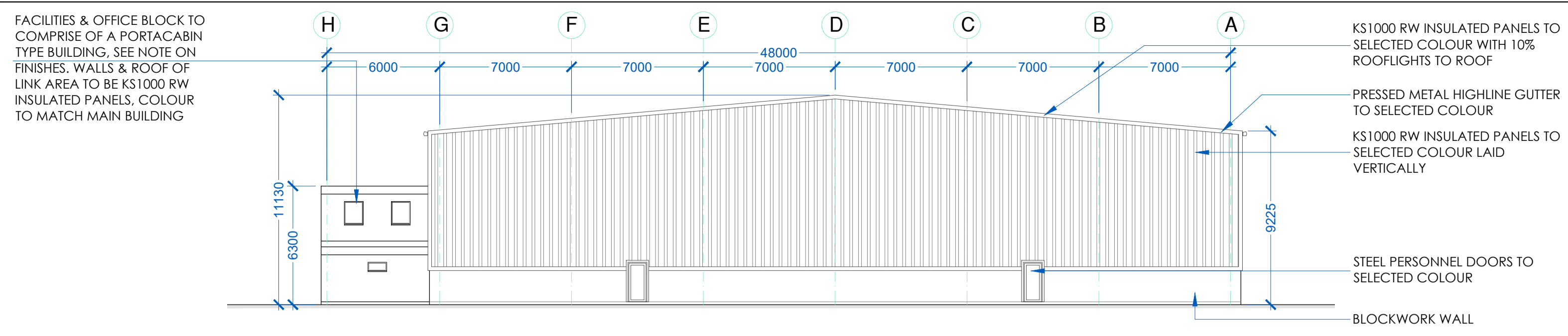


All dimensions to be checked on site. Figured dimensions take preference over scaled dimensions. Any errors or discrepancies to be reported to the Architects. This drawing may not be edited or modified by the recipient.

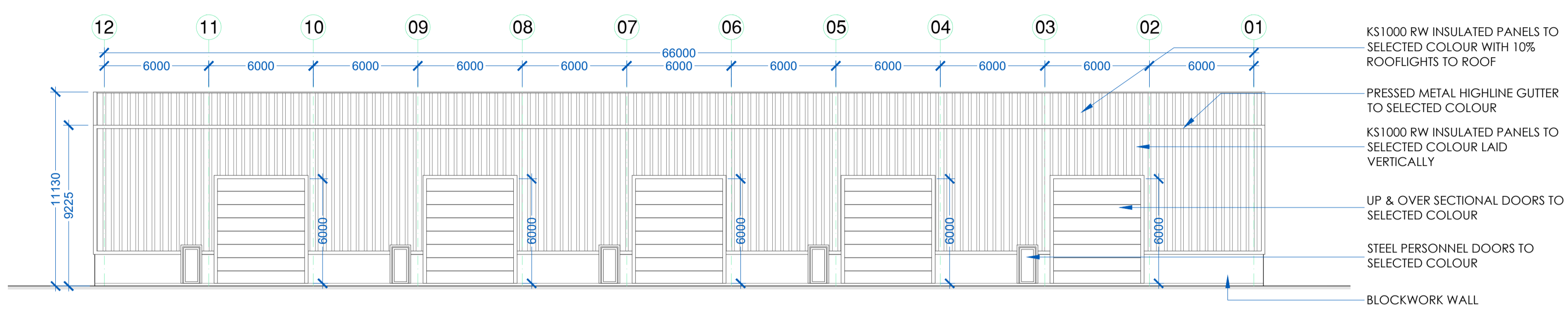
Copyright and ownership of this drawing is vested in STRUTEC, whose prior written consent is required for its use, reproduction or for publication to any third party. All rights reserved by the law of copyright and by international copyright conventions are reserved to STRUTEC and may be protected by court proceedings for damages and/or injunctions and costs.

**FACILITIES & OFFICE BLOCK SPECIFICATION**

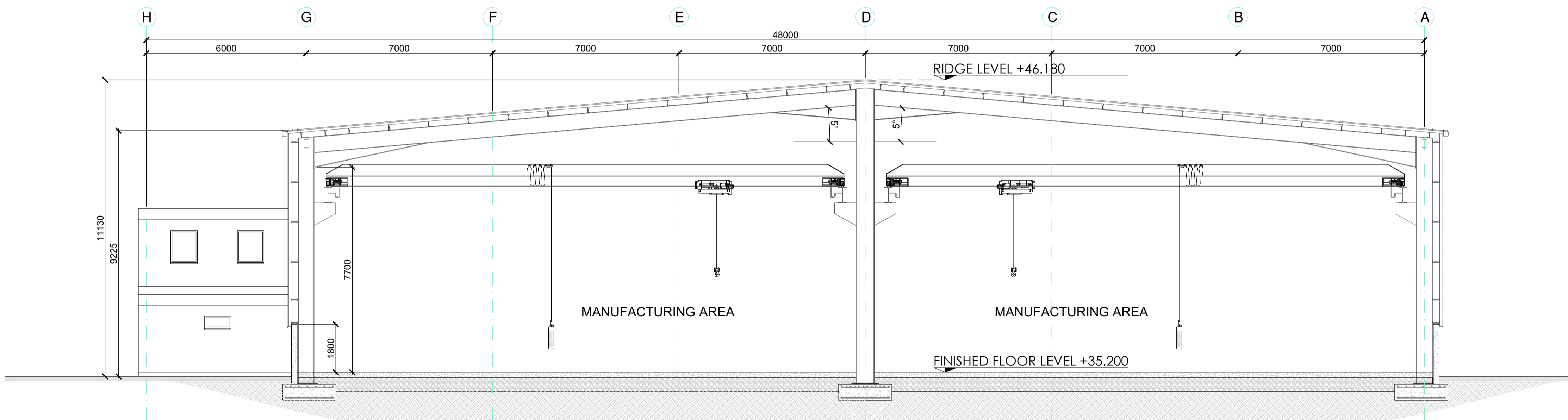
- Frame Work of Walls**  
Walls to be made out of sandwiched panel (47mm thick) using Cement Fiber Board inter locked with rectangular hollow sheet.
- Frame Work of Floor Base**  
The floor shall be made by mainly Drying Water Proof grade marine plyboard (12mm). The Platform & floor will be treated with wood preservative & anti-termite chemicals.
- Level Above Ground**  
The entire structure shall be raised above the ground so that the G.F.F.L. matches that of the F.F.L. of the main building, using steel supports (iron joists).
- External Doors & Windows**  
External Doors & Windows to be to be upvc framed to selected colour.



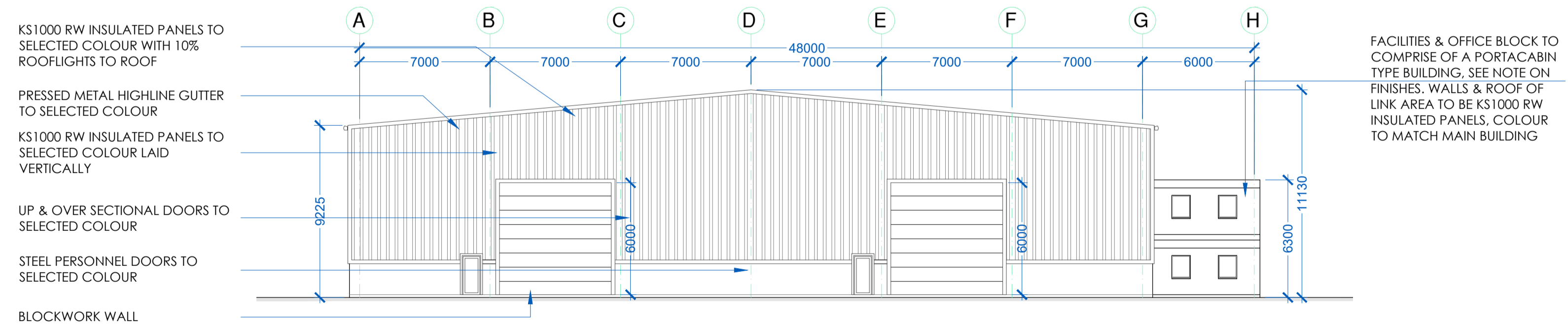
**SOUTH EAST ELEVATION (G.L. 12)**  
SCALE 1:200



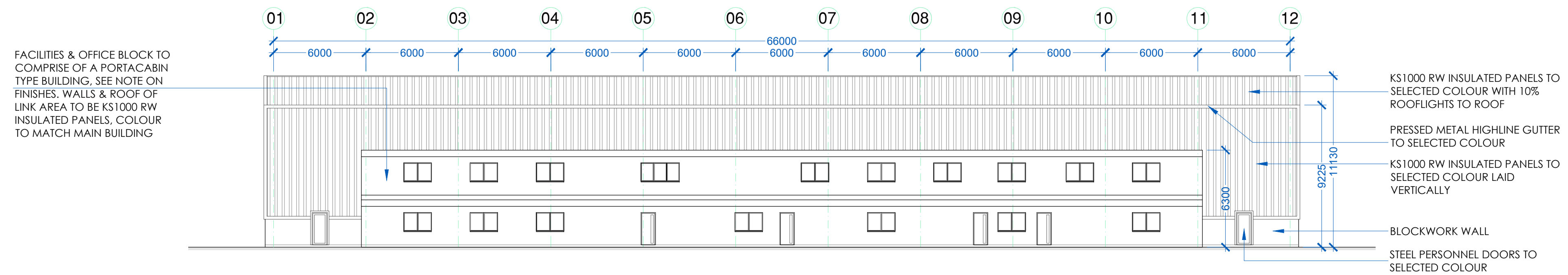
**NORTH EAST ELEVATION (G.L. A)**  
SCALE 1:200



**PROPOSED SECTION A - A (UNIT C)**  
SCALE 1:100



**NORTH WEST ELEVATION (G.L. 01)**  
SCALE 1:200



**SOUTH WEST ELEVATION (G.L. H)**  
SCALE 1:200

REV	DATE	REV BY	DESCRIPTION
-	24/07/19	MS	PLANNING
<b>STATUS</b>			
<b>PLANNING</b>			
<b>PROJECT</b>			
PROPOSED DEVELOPMENT FOR FIRTREE DEVELOPMENTS LTD.			
<b>PROJECT ADDRESS</b>			
BAGENALSTOWN INDUSTRIAL PARK, ROYAL OAK ROAD			
<b>DWG TITLE</b>			
PROPOSED SECTION A-A & ELEVATIONS - UNIT C			
<b>DWG NO</b>			
P-121			
<b>JOB NO</b>			
1704			
<b>DATE</b>			
24.07.19			
<b>SCALE</b>			
@ A1 1:200 & 1:100			
<b>DRN</b>			
Mark Savage			
 STRUTEC Architects - Engineers - Project Managers Garryhill, Bagenalstown, Co. Carlow, R21 KP44 Ireland +353 (0)599 97 27623 www.strutec.ie info@strutec.ie			