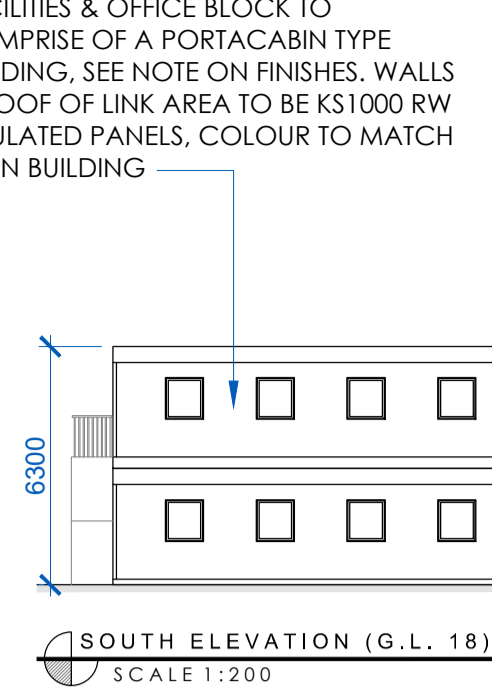
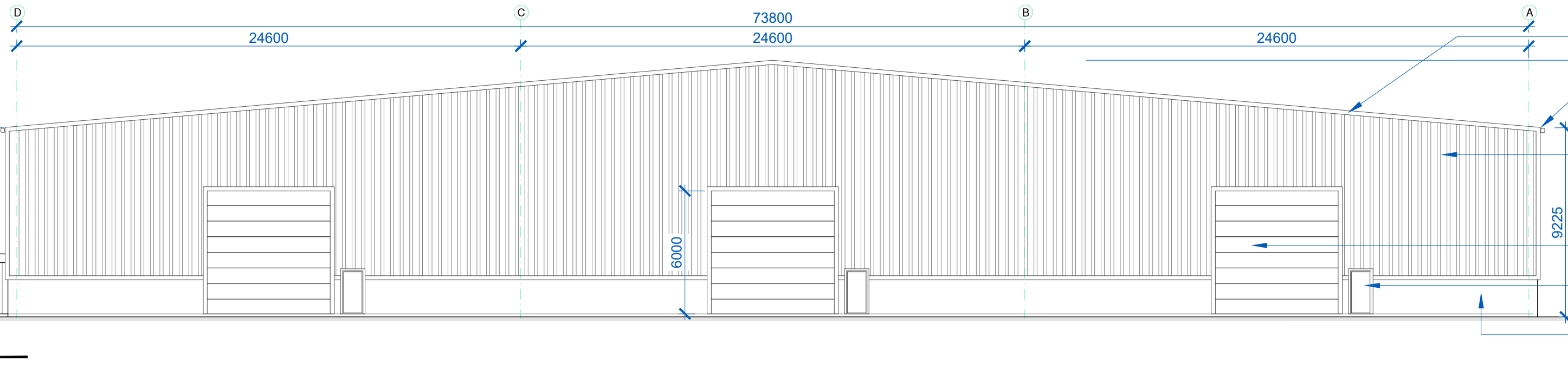


FACILITIES & OFFICE BLOCK TO COMPRISE OF A PORTACABIN TYPE BUILDING. SEE NOTE ON FINISHES, WALLS & ROOF OF LINK AREA TO BE KS1000 RW INSULATED PANELS, COLOUR TO MATCH MAIN BUILDING



SOUTH ELEVATION (G.L. 18)
SCALE 1:200



NORTH ELEVATION (G.L. 1)
SCALE 1:200

- KS1000 RW INSULATED PANELS TO SELECTED COLOUR WITH 10% ROOFLIGHTS TO ROOF
- PRESSED METAL HIGHLINE GUTTER TO SELECTED COLOUR
- KS1000 RW INSULATED PANELS TO SELECTED COLOUR LAID VERTICALLY
- UP & OVER SECTIONAL DOORS TO SELECTED COLOUR
- STEEL PERSONNEL DOORS TO SELECTED COLOUR
- BLOCKWORK WALL

- KS1000 RW INSULATED PANELS TO SELECTED COLOUR WITH 10% ROOFLIGHTS TO ROOF
- PRESSED METAL HIGHLINE GUTTER TO SELECTED COLOUR
- KS1000 RW INSULATED PANELS TO SELECTED COLOUR LAID VERTICALLY
- BLOCKWORK WALL
- STEEL PERSONNEL DOORS TO SELECTED COLOUR

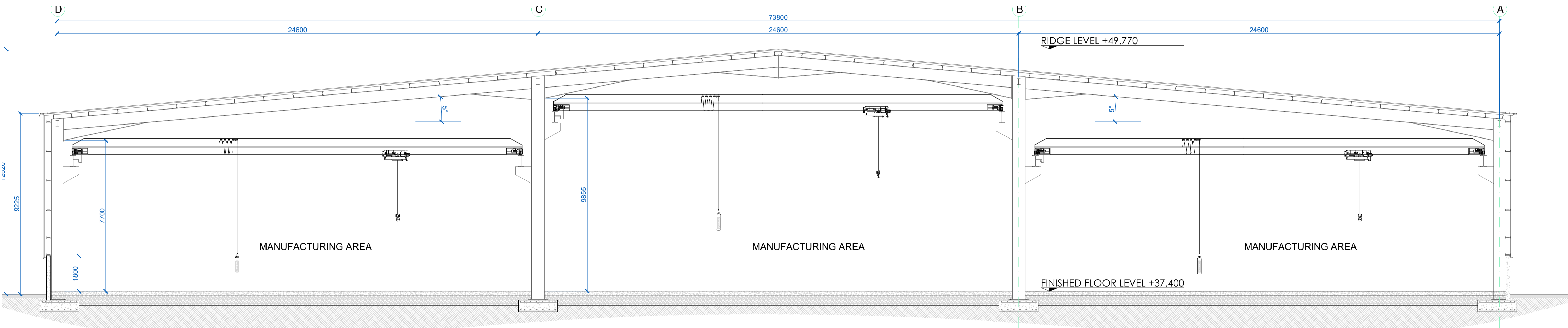
FACILITIES & OFFICE BLOCK SPECIFICATION

- Frame Work of Walls**
Walls to be made out of sandwiched panel (47mm thick) using Cement Fiber Board inter locked with rectangular hollow sheet.
- Frame Work of Floor Base**
The floor shall be made by mainly Boiling Water Proof grade marine plyboard (12mm). The Platform & floor will be treated with wood preservative & anti-termite chemicals.
- Level Above Ground**
The entire structure shall be raised above the ground so that the G.F. F.F.L. matches that of the F.F.L. of the main building, using steel supports (iron joints).
- External Doors & Windows**
External Doors & Windows to be to be upvc framed to selected colour

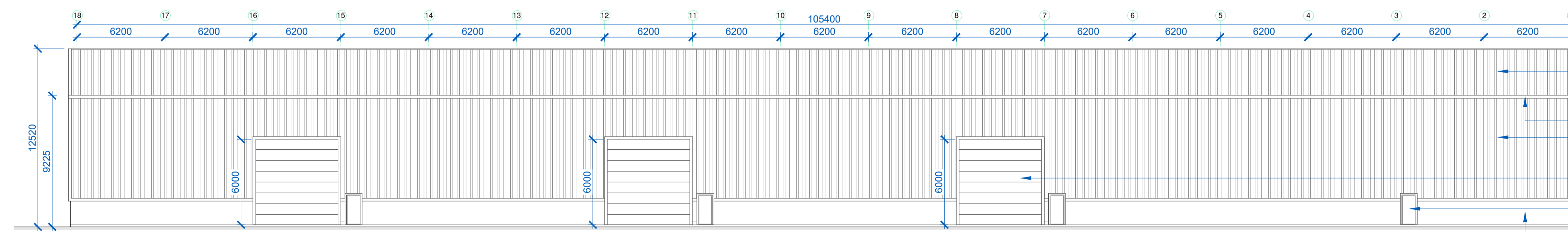
All dimensions to be checked on site. Figured dimensions take preference over scaled dimensions. Any errors or discrepancies to be reported to the Architects. This drawing may not be edited or modified by the recipient.

A1

*Copyright and ownership of this drawing is vested in STRUTEC, whose prior written consent is required for its use, reproduction or for publication to any third party. All rights reserved by the law of copyright and by international copyright conventions are reserved to STRUTEC and may be protected by court proceedings for damages and/or injunctions and costs.

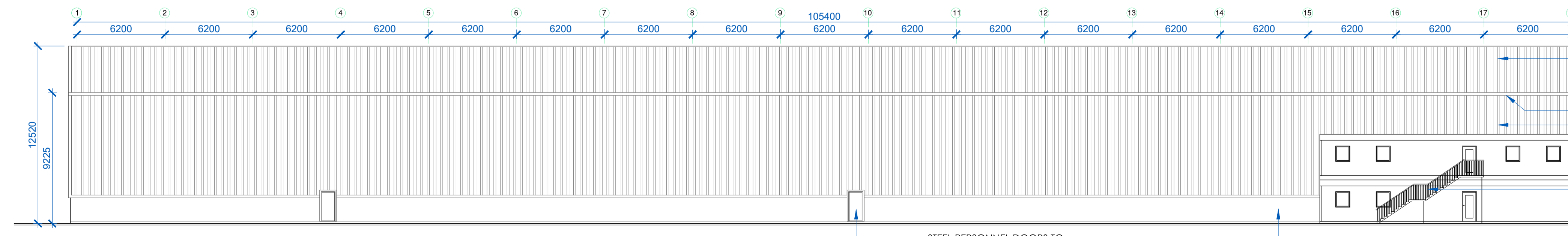


SECTION A-A
SCALE 1:100



EAST ELEVATION (G.L. A)
SCALE 1:200

- KS1000 RW INSULATED PANELS TO SELECTED COLOUR WITH 10% ROOFLIGHTS TO ROOF
- PRESSED METAL HIGHLINE GUTTER TO SELECTED COLOUR
- KS1000 RW INSULATED PANELS TO SELECTED COLOUR LAID VERTICALLY
- UP & OVER SECTIONAL DOORS TO SELECTED COLOUR
- STEEL PERSONNEL DOORS TO SELECTED COLOUR
- BLOCKWORK WALL



WEST ELEVATION (G.L. D)
SCALE 1:200

- KS1000 RW INSULATED PANELS TO SELECTED COLOUR WITH 10% ROOFLIGHTS TO ROOF
- PRESSED METAL HIGHLINE GUTTER TO SELECTED COLOUR
- KS1000 RW INSULATED PANELS TO SELECTED COLOUR LAID VERTICALLY
- GALVANISED MILD STEEL STAIRS & HANDRAIL
- BLOCKWORK WALL

REV	DATE	MS	PLANNING
1	24/07/19	MS	PLANNING
STATUS PLANNING			
PROJECT PROPOSED DEVELOPMENT FOR FIRTREE DEVELOPMENTS LTD.			
PROJECT ADDRESS BAGENALSTOWN INDUSTRIAL PARK, ROYAL OAK ROAD			
DWG TITLE PROPOSED SECTION A-A & ELEVATIONS - UNIT A			
DWG NO	P-101	REV	-
JOB NO	1704	SCALE @ A1	1:200 & 1:100
DATE	24.07.19	DRN	Mark Savage
 STRUTEC Architects - Engineers - Project Managers Garry Hill, Bagenalstown, Co. Carlow, R21 KP44 Ireland Tel: +353 (0)59 97 27623 W: www.strutec.ie E: info@strutec.ie			