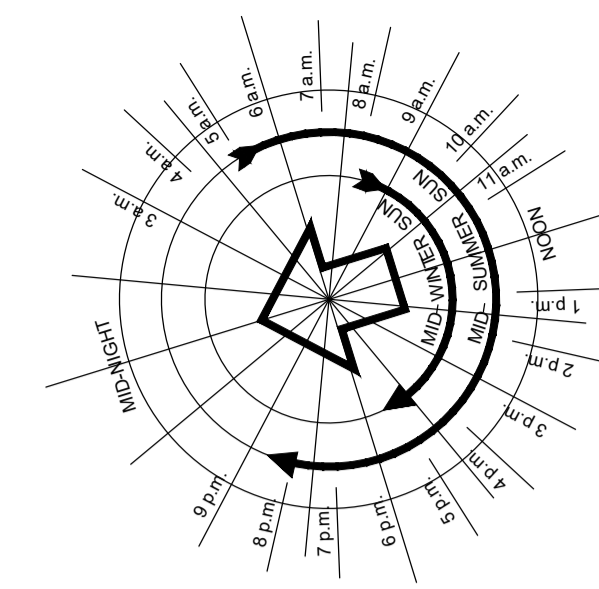


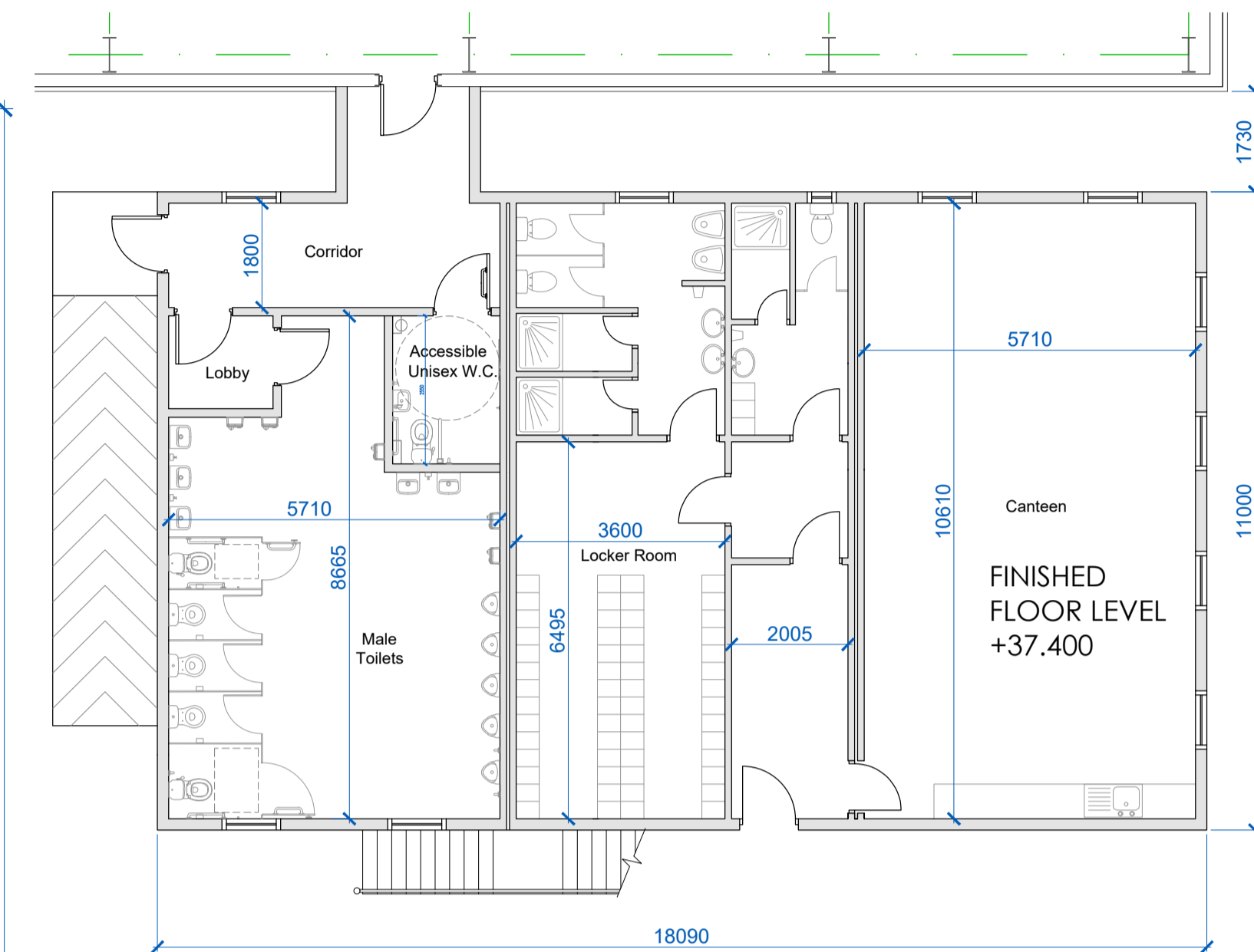
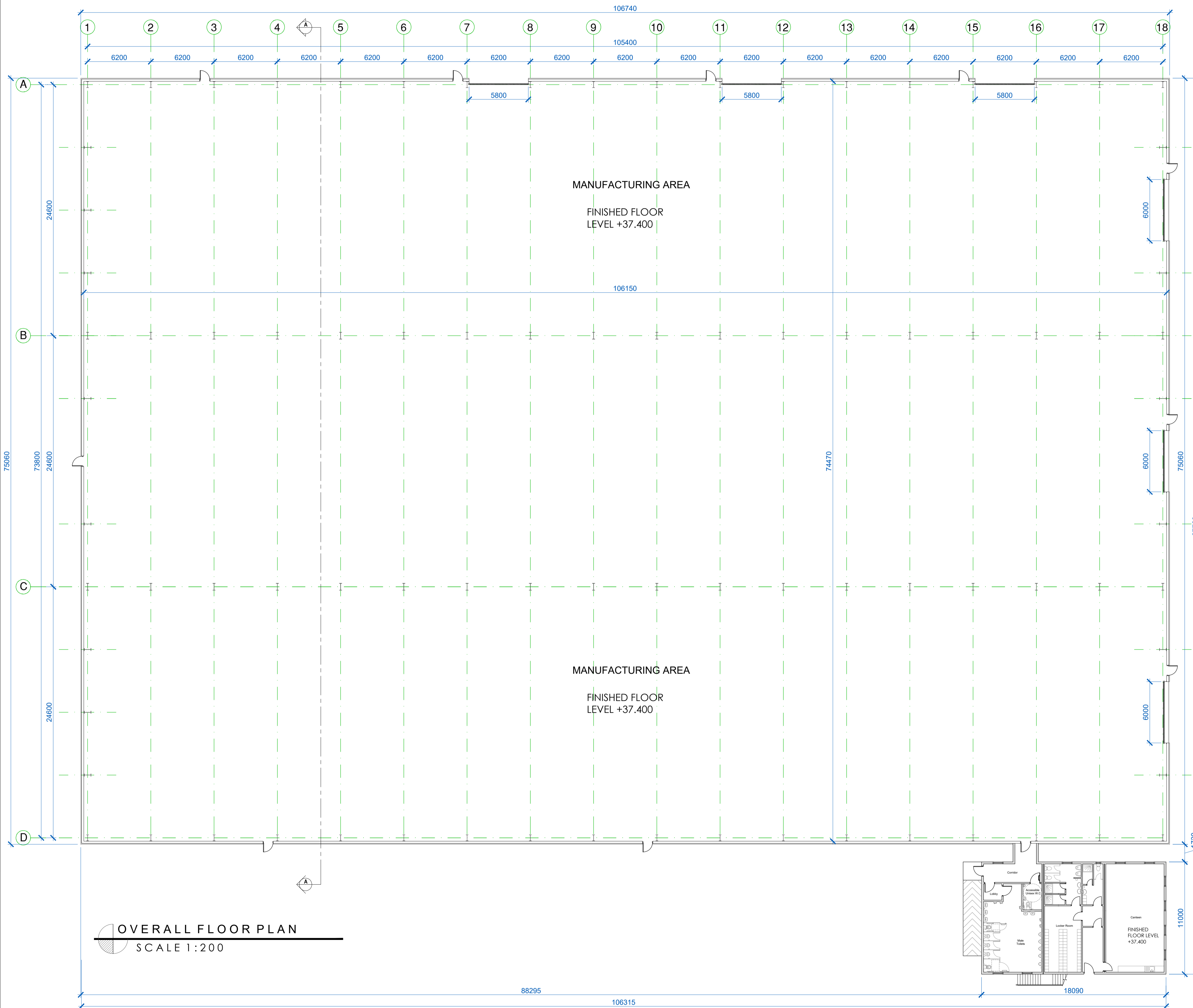
G.F. MANUFACTURING AREA = 7,905 m² / 85,089 ft²
 G.F. FACILITIES AREA = 193 m² / 2,077 ft²
 F.F. OFFICE AREA = 185 m² / 1,991 ft²
 TOTAL FLOOR AREA = 8,283 m² / 89,157 ft²



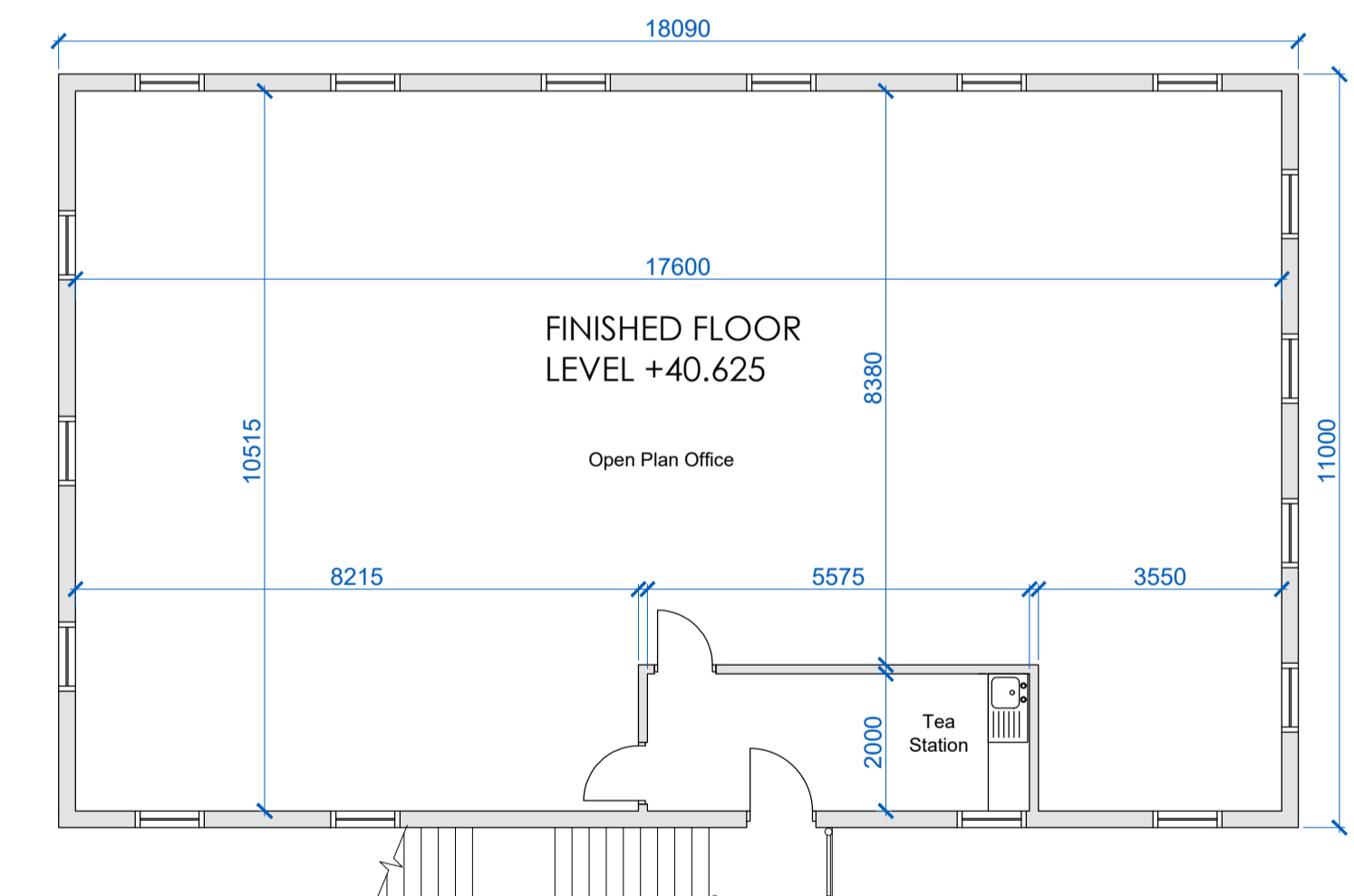
All dimensions to be checked on site. Figure dimensions take preference over scaled dimensions. Any errors or discrepancies to be reported to the Architects. This drawing may not be edited or modified by the recipient.

Copyright and ownership of this drawing is vested in STRUTEC, whose prior written consent is required for its use, reproduction or for publication to any third party. All rights reserved by the law of copyright and by international copyright conventions are reserved to STRUTEC and may be protected by court proceedings for damages and/or injunctions and costs.

A1



GROUND FLOOR FACILITIES PLAN
 SCALE 1:100



FIRST FLOOR OFFICE PLAN
 SCALE 1:100

OVERALL FLOOR PLAN
 SCALE 1:200

REV	DATE	MS	PLANNING
STATUS PLANNING			
PROJECT PROPOSED DEVELOPMENT FOR FIRTREE DEVELOPMENTS LTD.			
PROJECT ADDRESS BAGENALSTOWN INDUSTRIAL PARK, ROYAL OAK ROAD			
DWG TITLE PROPOSED FLOOR PLANS - UNIT A			
DWG NO	P-100	REV	-
JOB NO	1704	SCALE @ A1	1:200 & 1:100
DATE	24.07.19	DRN	Mark Savage
STRUTEC - Architects - Engineers - Project Managers Garryhill, Bagenalstown, Co. Carlow, R21 KP44 Ireland Tel: +353 (0)59 97 27623 W: www.strutec.ie E: info@strutec.ie			